



Setting Up Your ONL[®] Wireless Energy Monitor

Quick Start Guide

1

Remove All Items From Packaging

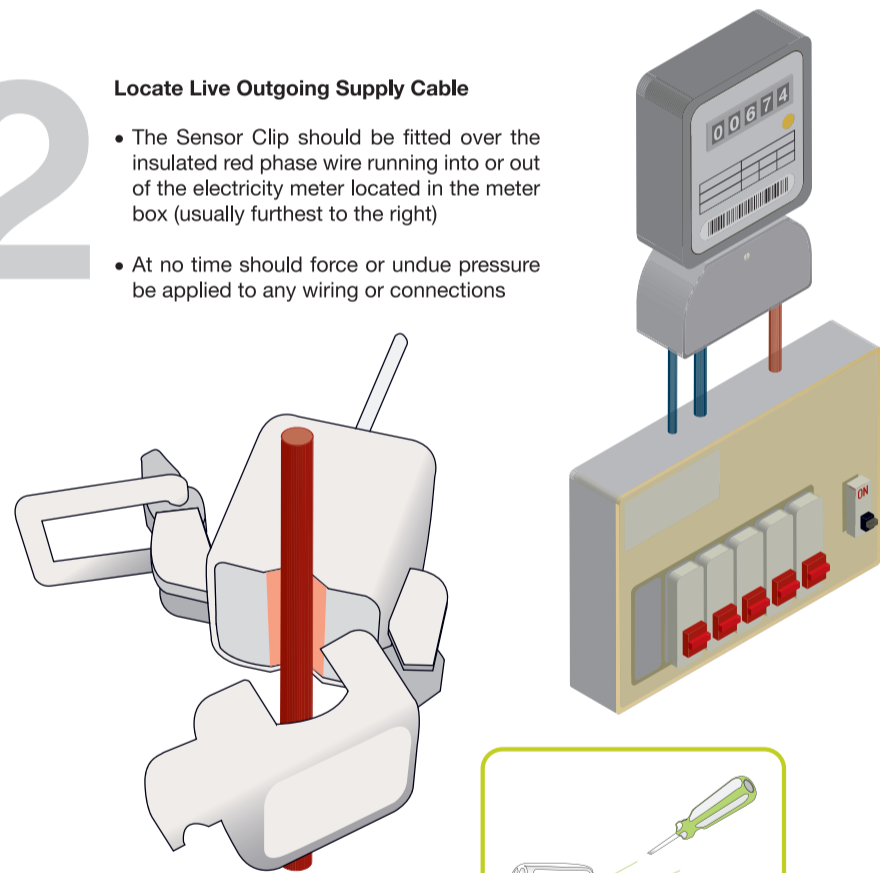
- Remote Monitor
- Sender Box
- Sensor
- 6 x AA Batteries
- User Manual



2

Locate Live Outgoing Supply Cable

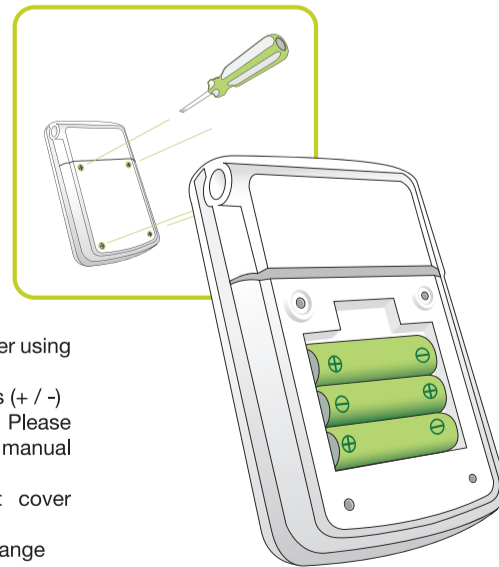
- The Sensor Clip should be fitted over the insulated red phase wire running into or out of the electricity meter located in the meter box (usually furthest to the right)
- At no time should force or undue pressure be applied to any wiring or connections



3

Install Sender Box Batteries

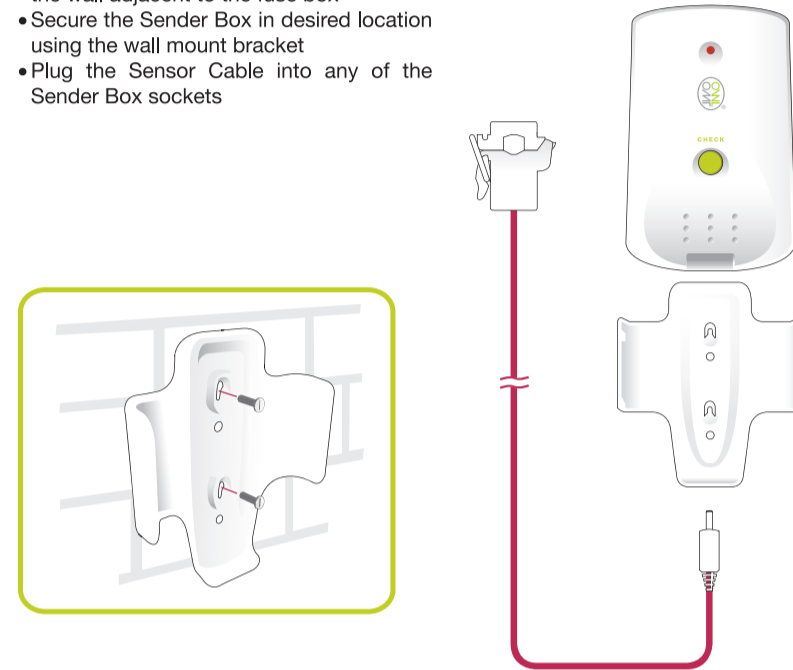
- Unscrew battery compartment cover using a Phillips screwdriver
- Insert batteries, matching polarities (+ / -)
- The CHANNEL should be set to 2. Please refer to 'Advanced Settings' in the manual if changing channels
- Screw the battery compartment cover back into place
- Press RESET after each battery change



4

Secure Sender Box in Desired Location

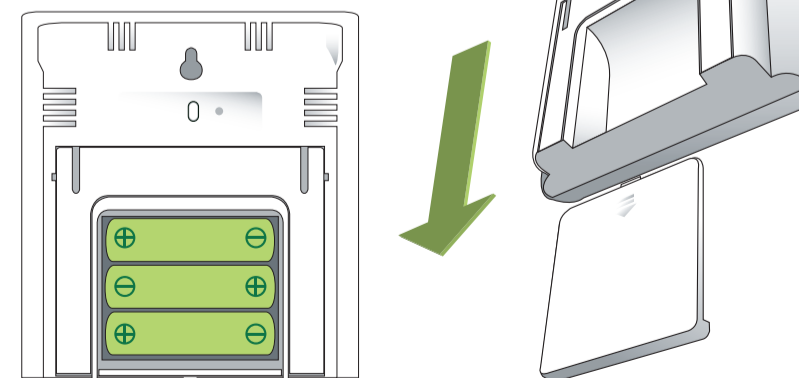
- Position Sender Box mounting bracket on the wall adjacent to the fuse box
- Secure the Sender Box in desired location using the wall mount bracket
- Plug the Sensor Cable into any of the Sender Box sockets



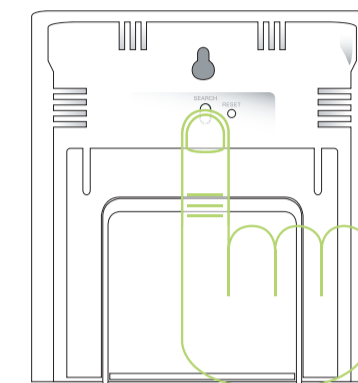
5

Install Remote Monitor Batteries

- Slide off battery compartment cover
- Insert batteries, matching polarities (+ / -)
- Slide battery compartment cover in place
- Press RESET after each battery change



6



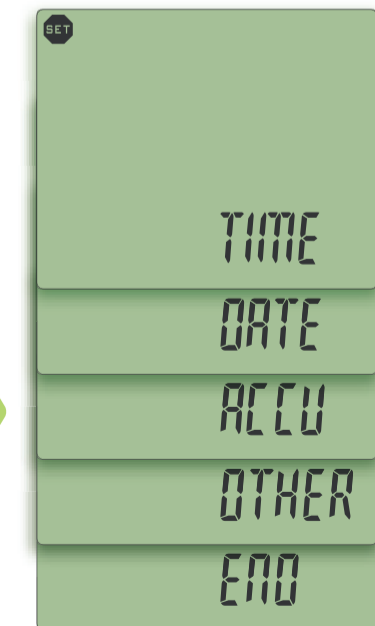
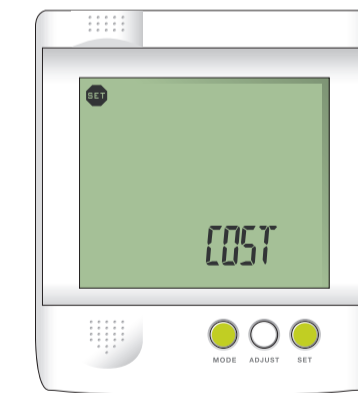
Pair Sender Box to Remote Monitor

- Press and hold SEARCH key on the back of the Remote Monitor until a tone is emitted
- The unit will search for a Sender Box in range for a maximum of 2 minutes
- Press and hold the CHECK key on the Sender Box until the red LED flashes
- The unit will transmit data every 2 seconds for 30 seconds

7

Setting Up Remote Monitor

- Press and hold the SET key to enter SETTING mode
- Press the MODE key to toggle between menu options
- Press SET key to enter sub-menus





7A

To Set Up the Cost on the Remote Monitor

- Press SET key to Enter COST menu
- Press the MODE key to scroll and SET key to enter TAR1 sub-menu
- Press SET key to Enter TIME menu
- Press ADJUST key to scroll and SET key to set Tariff Start Time (HH:MM)
- Press SET key to Enter RATE menu
- Press ADJUST key to scroll and SET key to set tariff rate (10:55 PENCE)
- Press the SET key to enter PEAK menu
- Press ADJUST key to toggle and SET key to select as a peak time (YES / NO)

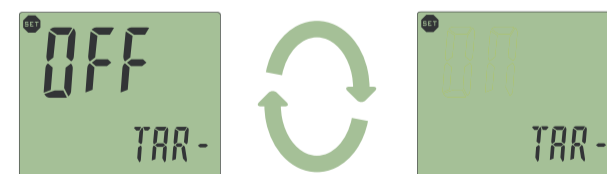


- Press SET key to enter ALM menu
- Press ADJUST key to toggle and SET key to enable/disable alarm (ON / OFF)
- Press ADJUST key to scroll and SET key to set alarm level (£02:00)
- Press MODE key to scroll and SET key to exit TAR1 sub-menu

7B

To Set Up Tariffs 2/3/4 on the Remote Monitor

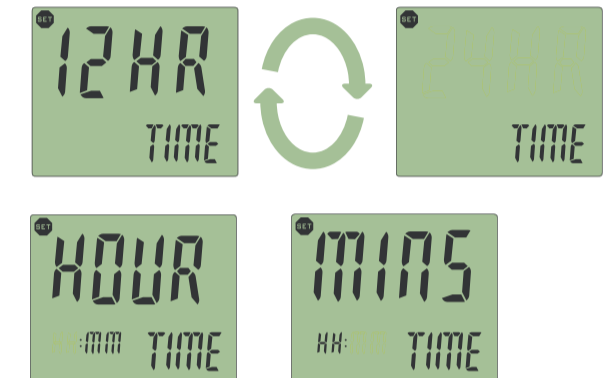
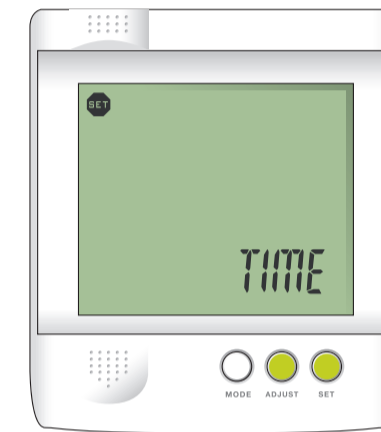
- Press MODE key to scroll and SET Key to enter TAR2, TAR3 or TAR4 sub-menus
- Press ADJUST key to toggle and SET key to enable/disable tariff
- Follow concurrent steps in section 7A



7C

To Set Up the Time on the Remote Monitor

- Press the SET key to enter TIME sub-menu
- Press ADJUST key to toggle and SET key to select 12/24 hour clock
- Press ADJUST key to toggle and SET key to set clock hours
- Press ADJUST key to toggle and SET key to set clock minutes



7D

To set up the Date on the Remote Monitor

- Press SET key to enter DATE sub-menu
- Press ADJUST key to toggle and SET key to select DD:MM or MM:DD date display
- Press ADJUST key to toggle and SET key to set Year
- Press ADJUST key to toggle and SET key to set Month
- Press ADJUST key to toggle and SET key to set Day

